



April 2020 Volume 12 Issue 4

# Aggregates and Mining Today

Your Online Industry Source

HOME

NEWS & ARTICLES

CATEGORIES

COMPANIES

ADVERTISE

SUBSCRIBE

CONTACT US



**BRING YOUR CHALLENGES.  
LEAVE WITH SOLUTIONS.**

**LEARN  
MORE**

## PRODUCT OF THE MONTH



**Archived Editions**

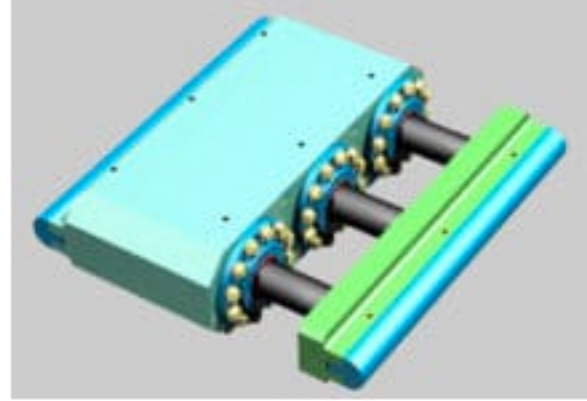
## FEATURED EQUIPMENT, PRODUCTS & SERVICES



### Richwood's Material Containment Systems = Worry-Free Load Zones

**Conveyors & Components** Richwood

Each application has its challenges. Material loss, wear and tear on equipment and safety issues are common problems in material handling, but they can...



### Automatic Welding's Hydraulic Toggle

**Crushing & Accessories** Automatic Welding Inc.

Automatic Welding's HYDRAULIC TOGGLE JAW CYLINDERS are designed to reduce the countless hours required to manually adjust the jaw setting for various aggregate sizes,...



### Xylem Leads the Way in Water Management Technology and Expertise

**Featured Programs** Xylem Industrial Solutions

Smarter water management in mining starts with a holistic view of how your operation uses water from sourcing to dewatering to reuse to everything...



### EMCO 360 Crusher Optimizer Feeder – from Deister Machine Company

**Featured Programs** Deister Machine Company Inc

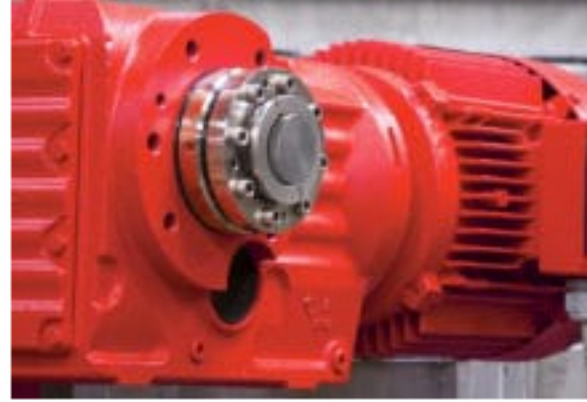
As Deister's latest addition to its EMF Series of two-mass electromechanical vibrating feeders, the EMCO 360 Crusher Optimizer Feeder is specifically engineered to optimize...



### New Rewards Program for Volvo Penta Users

**Crushing & Accessories** Volvo Penta

Volvo Penta launched a new online customer loyalty platform for our industrial dealers and customers called My Volvo Penta. This is a new incentive...



### SEW-EURODRIVE's TorqLOC® Hollow Shaft Mounting System Now Available on Industrial Gear Units

**Conveyors & Components** SEW-EURODRIVE

SEW-EURODRIVE's patented TorqLOC® hollow shaft mounting system is now available on SEW's X-Series industrial gear units, size 100-210, with machine shaft diameters from 75-185...



### Dyno Nobel Launches Enhanced DynoConsult

**Blasting & Drilling** Dyno Nobel

Dyno Nobel Americas recently made several enhancements to DynoConsult, its team of blasting experts, enabling the group to offer advice on optimizing the entire...



### Cedarapids® Unveils the CRH1113R Closed Circuit Impactor Crusher/Screen Plant

**Crushing & Accessories** Terex® MPS

At CONEXPO-CON/AGG 2020, Cedarapids®, a Terex® MPS brand, is looking forward to unveiling its latest crushing and screening solution, the highly portable CRH1113R closed...

## FOLLOW US



## AROUND THE INDUSTRY

### "Hide and Divide" Barriers to Optimization – Part 2

**Featured Stories** Kay Sever

### CONEXPO-CON/AGG Explores the Future of Construction at Return of The Tech Experience

**Featured Stories** ConExpo-ConAGG

### MSHA Response to COVID-19

**Featured Stories** Featured Stories

### Hyundai Construction Equipment to Offer Trimble's New Generation of Loader Onboard Scales

**Featured Stories** Featured Stories

### The Construction Industry Came Together in a Big Way at CONEXPO-CON/AGG & IFPE 2020

**Featured Stories** ConExpo-ConAGG

### "Hide & Divide" Barriers to Optimization – Part 1

**Featured Stories** Kay Sever

## ADDITIONAL PRODUCT REVIEWS



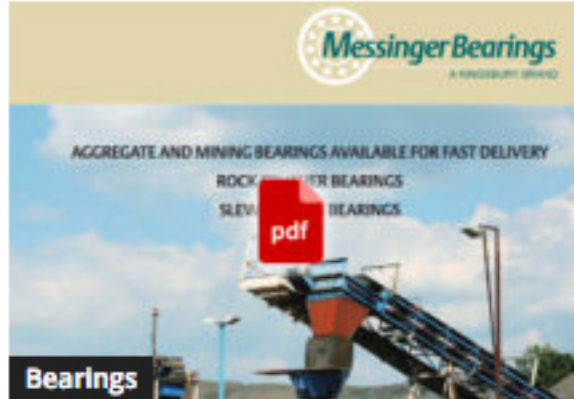
**Classifying & Washing**

Masaba to Showcase Product Enhancements at CONEXPO



**Crushing & Accessories**

Crushers & Feeders from Texas Crusher



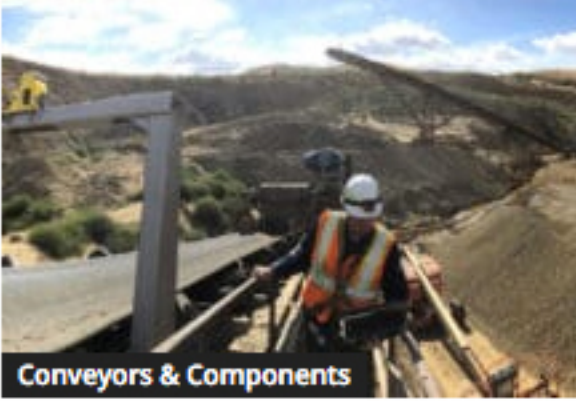
**Bearings**

Crusher Bearings Brochure from Messinger



**Classifying & Washing**

Van Tongeren's Breakthrough Dry Process Classifier Systems Separate Particles Without Water



**Conveyors & Components**

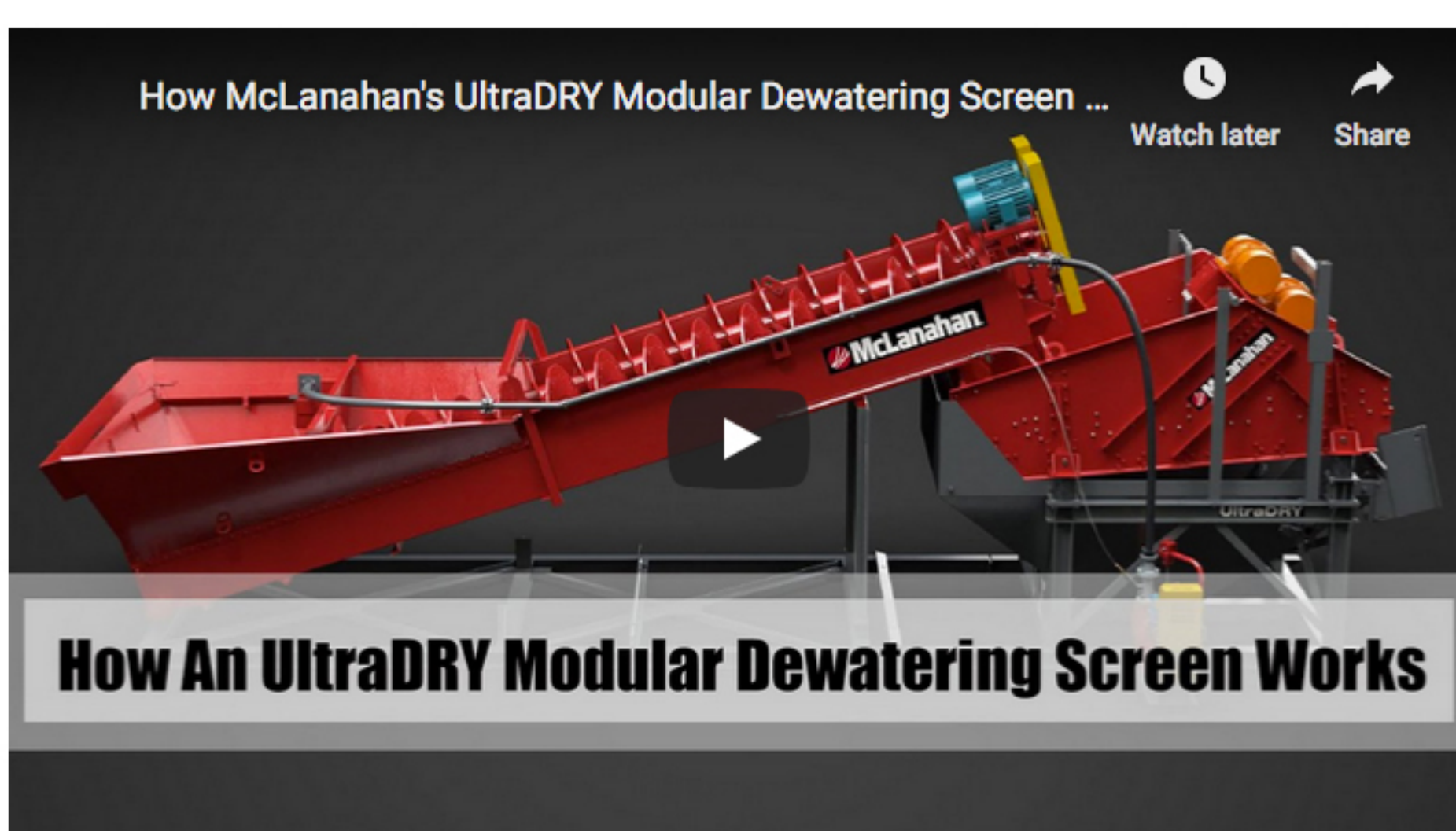
VEGA Americas WeighTrac 31 Provides Reliable Measurement for Materials on the...



**Classifying & Washing**

McLanahan to Showcase UltraWASH and Features

## VIDEO VIEWER



## MORE PRODUCT REVIEWS

**Libra Announces Integrated GPS Asset/Truck Management Solution**

**Mine & Plant Planning/Services** Libra Systems Corporation

**Crusher Replacement Bearings from Messinger Bearings**

**Bearings** Messinger Bearings

**Dings Company's Magnetic Separators Remove Tramp Iron**

**Conveyors & Components** Dings Company Magnetic Group

**Tecweigh Control Gates: Precise Flow Control of Aggregate from Sand to Rock**

**Conveyors & Components** Tecweigh / Tecnetics Industries

**Advanced Detection Systems SurroundScan Protector HD Metal Detector**

**Conveyors & Components** Advanced Detection Systems

**Minet Lacing Technology (MLT) MS® Fasteners – Superior Installation Using Screws**

**Conveyors & Components** Minet Lacing Technology

**Crisp Industries Specializes in Design and Construction of New Aggregate Material Systems**

**Conveyors & Components** Crisp Industries Inc.

**Vulcan On-Board Scales Weighing Solutions for Underground and Above Ground Vehicles**

**Scales & Weighing** Vulcan On-Board Scales

**New MOBISCREEN EVO Screening Plants Introduced to North America by Kleemann**

**Portable Plants & Equipment** Kleemann

**AZFAB Introduces QUAD Attrition Mill**

**Classifying & Washing** AZFAB LLC.

**SEND US YOUR NEWS!**  
EDITORIAL SUBMISSIONS ARE FREE

Click here and email us with your latest News, Trends, New Product Announcements, Appointments, New or Updated Websites, Featured Story Suggestions, Association News, Press Releases along with ideas you think would benefit our readers.

**EMAIL US**

## CURRENT NEWS

**CEMEX Re-starts Mexico Operations**

**Current News** Current News

**Terex Trucks Signs Border Equipment Up As New Dealer in Georgia**

**Current News** Current News

**LafargeHolcim Says China Construction Market Recovering**

**Current News** Current News

**IAEM Calls for National Manufacturing Strategy**

**Current News** Current News

**CalPortland® Earns 2020 Energy Star® Partner of the Year – Sustained Excellence Award**

**Current News** Current News

**Caterpillar Foundation Pledges \$8.5m to COVID-19 Response Efforts**

**Current News** Current News



## ABOUT US

2014 Holland Ave, Suite 592 Port Huron MI 48060  
Phone: 888-430-8005 | 519-858-8410

Contact us: [info@aggregatesandminingtoday.com](mailto:info@aggregatesandminingtoday.com)

## FOLLOW US

